

Keeping it Modern

By Susan Talpey
Living Editor

In its third year, the Arts Center at Killingworth's Autumn Art Trail 2007 has a new twist: it's gone modern.

"On the shoreline there are many modern artists who don't get as much exposure and this year we wanted to reach out to a different group of artists and art-lovers," says Barbara Nair, executive director of the center.

In addition to recognized and emerging modern artists, some local realists will exhibit more experimental work.

"We have a few realists on the trail who also paint offbeat subject matter and they'll be showing some of that less recognized, more interesting work," Nair says.

According to Nair, living in an artistic area well known for impressionist and realist work makes it difficult for modern artists to be recognized.

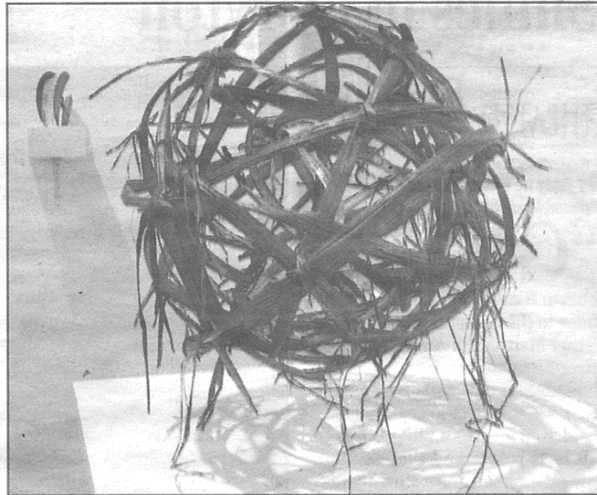
"People know these artists are around but they have to hunt for them, so they've been very grateful and happy to be getting attention and promotion," she says. "They're very eager to submit work and to open their studio to the public."

Last year's trailgoers said they wanted more studios on the list and a more expansive trail, Nair says. This year's event not only has more studios but is also a broader map, with stops in Chester, Essex, Killingworth, Ivoryton, Westbrook, and even Hadlyme.

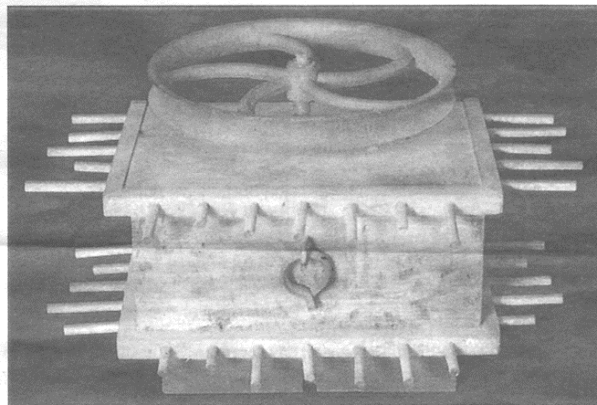
"You can see the artist at work in their private studio and you'll leave knowing more about the artist and the art form than when you went in," she says. "You can see the tools the artist works with, books that have inspired them, and their work at different stages. It's a lot more interactive than most gallery experiences."

Meeting an artist gives new meaning to purchasing their work, Nair says.

"Buying art is a really, really personal choice. On the trail you



Sacred Space by Sharon Didato



Wheel with Dowels by Bill Vollers

meet an artist in their home and make a deeper connection with the piece. It has real meaning—a story behind it."

And many trailgoers come home without a new piece for their wall, but certainly not empty-handed.

"Above all, people enjoy the trail because it's an adventure. You can stop and eat at great local places, enjoy the fall foliage, and of course, meet artists you've only heard about, or never heard about," Nair says.

"It's a very un-intimidating, warm, friendly way to get to know a variety of artists and art forms. It's not a lecture or a class, or a museum or gallery experience. The artists have signed up to be a part of the trail because they want to share with the community to

Open Studios on Autumn Art Trail 2007

Chester

Francine Curto
Amy Day Kahn
Carolina Marquez-Sterling
Claudia Post
Claudia Vannes
Bill Vollers

Essex

Pam Carlson
Pam and Richard Davis
Sharon Leigh Didato

Ivoryton

Cynthia McCallister
Matson Vollers

Killingworth

Weymouth Eustis
Amy Goldfarb
(at the Arts Center)
Rene Gugliemino
(at the Arts Center)
Bill Hosking
(at the Arts Center)

The Autumn Art Trail 2007 Open Artists' Studio Weekend is on Saturday, Oct. 13, 11 a.m. to 6 p.m., and Sunday, Oct. 14, 11 a.m. to 5 p.m. The Millhouse Gallery, 5 West Main Street, Chester, hosts a juried exhibit of work by trail artists and others through Nov. 2, with a reception on Friday, Oct. 12 from 7 to 9 p.m. and a family art workshop Oct. 20 and 21. An open studios weekend pass is \$10; children 12 and under are free. For tickets on the day, visit The Arts Center at Killingworth, 276 N. Parker Hill Road. For info, call 860-663-5593 or visit www.artscenterkillingworth.org.